

## C-70

### (EN) Anchor Bolt / (TR) Ankraj Kulağı

EN 795:2012 Type A and CEN/TS 16415:2013 Type A

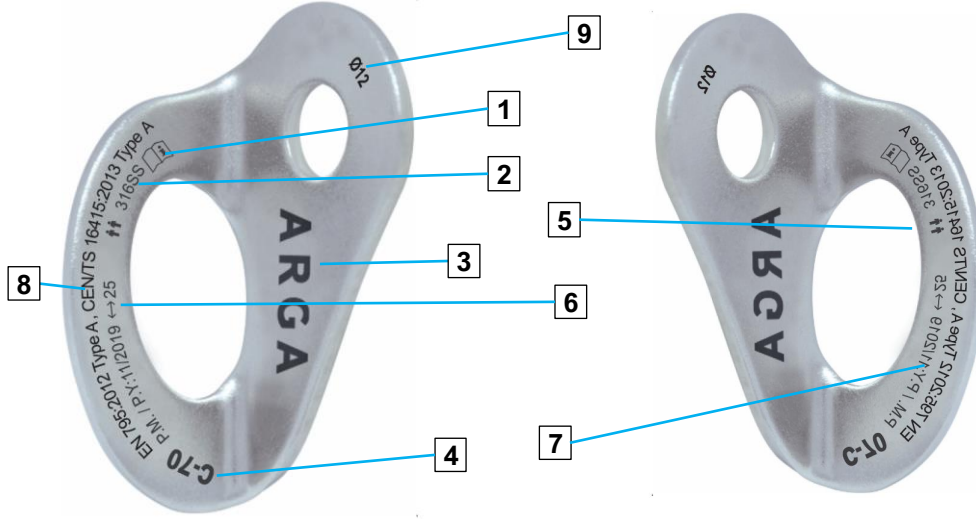


(EN) The Notified body in charge of EU type examination /  
(TR) CE Tip Onay belgesinden sorumlu Onaylı kuruluş

ALIENOR CERTIFICATION (NB 2754)  
ZA du Sanital - 21 rue Albert Einstein 86100 Chatellerault – France

<h1>ARGA</h1>	<h2>SCHEMATIC INSTALLATION PLAN</h2>
<b>Customer</b>	
Name:	Contact Person:
Address:	Phone:
<b>Building /Structure Location</b>	
Name:	Order No:
Address:	Building Type:
	Anchor Device:
<b>Installer</b>	
Name:	Chief Istaller:
Address:	Phone:
<b>Anchor Device</b>	
Manufacturer:	
Model/Type Identification:	
<b>Building Component</b>	
Component 1:	Quality:
Component 2:	
Building Material:	
<b>Building Component</b>	
The installer has to define a drawing	
<div style="display: flex; justify-content: space-between;"> <div style="width: 45%;"> <p><b>Fixing data</b></p> <p><input type="checkbox"/> data not required if through fixed</p> <p>Real situation:</p> <p>Remarks:</p> <p>Drilling method:</p> <p>Testing device:</p> <p><b>CHECK LIST:</b></p> <p><input type="checkbox"/> Substrate as expected (no doubt on capacity)</p> <p><input type="checkbox"/> Installation complies with manufacturer's instructions</p> <p><input type="checkbox"/> Recommended fixings used</p> <p><input type="checkbox"/> All fixings photographed with identification number</p> <p><input type="checkbox"/> Fixings exposed</p> <p><input type="checkbox"/> Installation plan placed on site →</p> <p><input type="checkbox"/> Screw securing by through hole fixing technology</p> <p><input type="checkbox"/> Additional information</p> </div> <div style="width: 45%;"> <p>Drill-hole diamt : _____ mm</p> <p>Drill-hole depth : _____ mm</p> <p>Torque : _____ Nm</p> <p>Edge distance Cx: _____ Cy: _____</p> <p>Axial spacing Sx: _____ Sy: _____</p> <p>Type: _____</p> <p>Material: _____</p> <p>Min. edge distance (c): _____</p> <p>Min. axial spacing (s): _____</p> <p>Min. component thickness: _____</p> <p>Permissible tensile force: _____</p> <p>Permissible shear force: _____</p> <p>Impact System <input type="checkbox"/> yes <input type="checkbox"/> no</p> <p>wet <input type="checkbox"/> yes <input type="checkbox"/> no</p> <p>dry <input type="checkbox"/> yes <input type="checkbox"/> no</p> <p><input type="checkbox"/> Hammer <input type="checkbox"/> Drill-hole cleaning</p> <p><input type="checkbox"/> Rotary <input type="checkbox"/> Fixing test device</p> <p><input type="checkbox"/> Torque controlled spanner</p> <p><b>Roof ground plan:</b></p> </div> </div>	
Required pull-out force (kN), required torque (Nm) achieved?	
Anchor point 1	Anchor point 5
Anchor point 2	Anchor point 6
Anchor point 3	Anchor point 7
Anchor point 4	Anchor point 8
Anchor point 9	Anchor point 10
Anchor point 11	Anchor point 12
Additional Fixings:	
Remarks by the chief installer	
Date:	Signature:

(EN) Label / (TR) Etiket



**Label Information / Etiket Bilgileri**

- 1- Read User Guide / Kullanım Kılavuzu oku
- 2- Material / Malzeme
- 3- Trade Mark / Ticari Marka
- 4- Product Name / Ürün Adı
- 5- Number of user / Kullanıcı sayısı
- 6- Vertical axes strength / Dikey eksen mukavemeti
- 7- P.M: Production Month, P.Y.: Production Year / P.M.:Üretim Ay, P.Y.: Üretim Yılı
- 8- Standards / Standartlar
- 9- Bolt Diameter / Çivi Çapı

(EN) Bolt / (TR) Ankraj Çivisi



(EN) Bolt

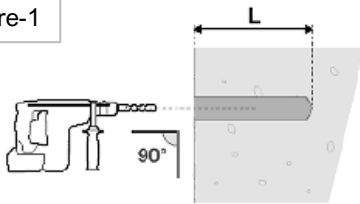
HSA-R Ø 12 mm 316 Stainless Steel or equality

(TR) Ankraj Çivisi

HSA-R Ø 12 mm 316 paslanmaz çelik veya aynı kalitede

(EN) Installation / (TR) Montaj

Figure-1



L: 100 mm

Figure-2.1

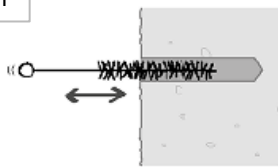


Figure-2.2

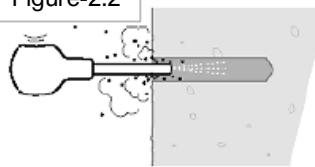


Figure-3.1

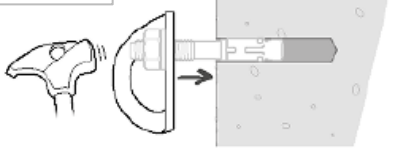
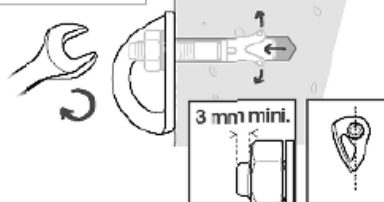
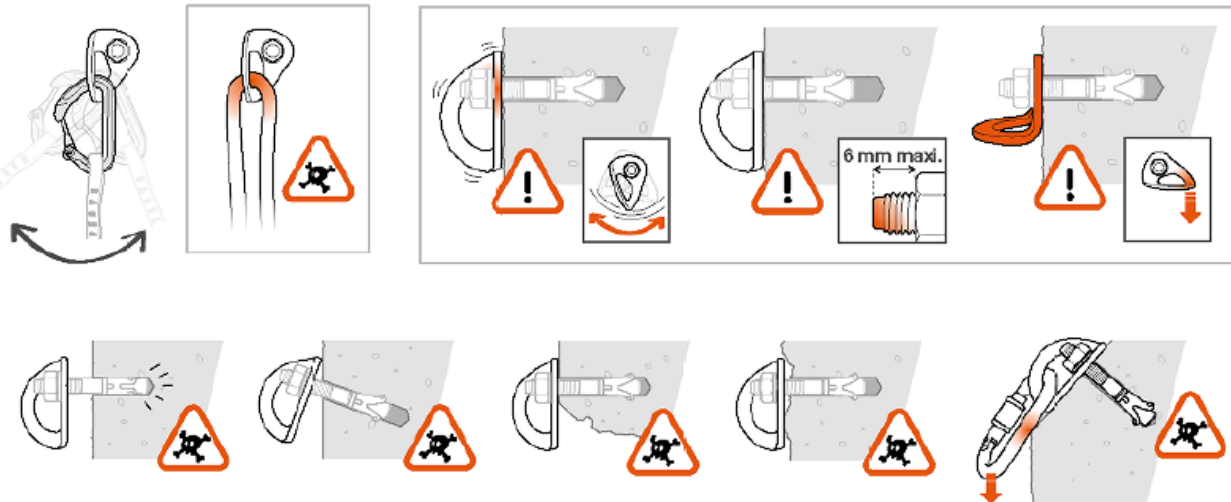


Figure-3.2



50 Nm

Figure-4



These instructions explain how to correctly use your equipment. Only certain techniques and uses are described. The warning symbols inform you of some potential dangers related to the use of your equipment, but it is impossible to describe them all.

You are responsible for heeding each warning and using your equipment correctly. Any mis use of this equipment will create additional dangers. Contact ARGA if you have any doubts or difficulty understanding these instructions.

## 1- Area of Use

C-70 Bolt is a type A anchor device (EN 795: 2012 type A and CEN/TS 16415:2013 Type A) for protection against falls from height.

- Use only two-person.
- The anchor vertical access Minimum breaking strength is 25 kN, this value is under ARGA responsibility.

## 2- Responsibility

- Make sure that you have read and understand of this user guide.
- The users must read and fully understand these instructions or have the instructions explained in detail before using this equipment. Failure to observe these instructions could result in serious injury or death.
- Working at height is acknowledged as one of the most dangerous activities that cause fatal accidents. Prior to use, all workers must be trained in the proper use of the systems. A training and instruction review should be repeated at regular intervals.
- C-70 must not be used for anything other than its intended purpose
- When the anchor device is used as part of a fall arrest system, the user has to be equipped with a means of limiting the maximum dynamic forces exerted on the user during the arrest of a fall to a maximum of 6 kN.
- 
- C-70 must be connected to an anchor point, which is marked with "A", on the back or chest of a full body harness (EN 361) using an energy absorber lanyard (EN 355).
- The anchor device should only be used for personal fall protection equipment and not for lifting equipment.

## 3- Raw material:

- C-70 is made of 316 grade stainless steel.

## 4- Anchor Point (EN 795:2012 Type A, CEN/TS 16415:2013 Type A) (EN 365:2004)

C-70 is suitable for use of maximum two user at a time.

- Installation of the C-70 anchor must be performed by persons who has trained for installation and authorized by ARGA. The responsibility entire system belongs to the company or person that has performed the installation.
- C-70 anchor is designed to create an anchor point on concrete C20/25 quality.
- The anchor must be installed on a bolt of which minimum breaking strength is 25 kN. The force to the structure arises from a fall will be the same direction with the fall and the maximum force which is going to be generated, will be 13 kN.

**Product Code:** C-70

**Material:** 316 grade Stainless Steel

**Warning:** Diameter of the screw must be 12 mm and 316 quality stainless steel

## Installation Steps

Before installation, verify that the hanger and its means of attachment to the supporting medium (e.g. the bolt) are made of the same material.

### Example of installation with an expansion bolt:

- Check the quality of the supporting medium around the anchor. Make sure the concrete is solid and uniform.

#### **Figure-1.**

- After cleaning the drilling area of any concrete, drill a hole of the appropriate diameter and depth. **Figure-2.**
- Clean the hole with a brush, then with a blower. **Figure-3.**
- Push the bolt with the hanger into the hole and tighten the nut to the recommended torque (50 Nm). **Figure-4**
- After each installation, verify that the quick draw moves freely in the hanger.

**Warning:** If the bolt overhangs too much, it can hinder free movement of the quick draw in the bolt hanger.

## Hanger removal:

Unscrew the nut and remove the hanger. Before reusing the hanger, carry out a detailed inspection of it.

## Strength

The concrete quality must be at least C20 or higher.

The anchor breaking strength values depend on the quality of the supporting medium and on the quality of the placement.

**Warning:** The anchor strength can be near zero if poorly installed.

## 5. Supplementary information regarding standard; EN 365

### 5.1 Rescue Plan

While using the product, you must have a rescue plan to be recovered from a emergency or difficult situation immediately. Adequately trained personnel and rescue equipment must be on hand for rescue.

### 5.2 Anchor Point

The anchor point of the system comprises this product should preferably be located above the user or should at least located at the waist level of the user. An attachment point below this level will cause a serious injury or death. The anchor point must conform to the requirements of the EN 795 standard and the minimum strength of it must be 12 kN.

### 5.3 Various Situations

- In a fall-arrest system, it is essential to check the required clearance under the user before each use, to avoid any impact with the ground or an obstacle in case of a fall.
- Make sure that the anchor point is correctly positioned, in order to limit the risk and the height of a fall.
- When using multiple pieces of equipment together, a dangerous situation can result if the safety function of one piece of equipment is affected by the safety function of another piece of equipment.
- Users must be medically fit for activities at height. Warning: inert suspension in a harness can result in serious injury or death.
- The instructions for use for each item of equipment used in conjunction with this product must be respected.
- The instructions for use must be provided to users of this equipment in the language of the country in which the product is to be used.

**Warning:**

- This anchor needs for regular periodic examinations, and that the safety of users depends upon the continued efficiency and durability of the equipment.
- This product shall not use any emergency in use.

The product must be inspected at least one time in a year by manufacturer or a competent person authorized by manufacturer (ARGA). Product is have to be marked with a sticker that includes the date of the next or last inspection by ARGA Inspector.

- The anchor devices should be installed only by competent persons or competent organizations
- If the marking of the anchor device is not accessible after installation, additional marking must be near the anchor device.

## **6 Control of product and validation**

### **6.1 Before each use:**

Working at height equipment must be inspected before each use and / or on a regular basis. All information must be recorded on product control book. Inspection must be performed based on following control criteria;

- Where the installation is being made must be checked for a deformation, crack.
- Bolt or hanger must be checked for on any wear or cracks
- System components must be checked if they have been in contact with any corrosion.

If the product has one of the deviations above it should be withdrawn from service immediately. Defects found on the product should not be repaired; manufacturer must be informed about it and user must proceed as per manufacturer's recommendation.

### **6.2 During each use:**

During performing the work at height if the equipment is connected with another system, make sure that all pieces of equipment in the system are correctly positioned with respect to each other.

## **7. Arga General Information**

### **7.1 Product Life:**

\*Unlimited lifetime. There is no theoretical lifetime of metallic materials. Products must be documented by at least one time per year to determine if the product is safe to use. ARGA is not responsible for the use of the product that has no annual periodic control.

C-70 Anchor is made of 316 grade Stainless Steel. The 316 grade stainless steel is highly resistant to atmospheric corrosion. Depending on the area of the use superficial rust spots can be seen on the product (In a short time of period industrial sites; iron powders and chemicals. The areas near sea water; salt in the air like...). These superficial stains can be removed with an appropriate maintenance program.

In all circumstances decision to continue to use the product can only be made if annual periodic control has been performed and resulted positive by manufacturer or a competent person authorized by manufacturer

If the product has one of the deviations below it should be withdrawn from service immediately and should be destroyed to prevent further usage;

- It has suffered a heavy shock load or has had a load dropped onto it.
- If observed signs of corrosion on the product
- If product was recorded not suitable for use during a control and if you have any doubt about that.
- Changes in standards, legislation and changes related to technical use of it, and similar cases.

## 7.2 Storage:

Product is sold with its storage bag. Instruction manual for use and applied standards are written on the product sheet. Storage area of the product should meet following requirements;

- Dry, no direct sun light, room temperature,
- Do not store together with acid, solvents etc.
- Keep away from direct heat sources.
- Keep aware from chemicals such as corrosive and acids.

## 7.3 Maintenance:

Taking good care of the product after each use extends the life of it. Use metal cleaners to clean the product. For detailed information please contact us on [info@argasafety.com](mailto:info@argasafety.com)

## 7.4 Changes and repair

Changing a part, repair and addition to any component of the system is strictly forbidden without written authorization of ARGA. Any repairs on products can only be done by manufacturer or qualified persons authorized by the manufacturer. All repair and maintenance work must only be performed in accordance with manufacturer's instructions ARGA won't be responsible for repairs performed by for unauthorized persons.

Manufacturer's instructions for repair and maintenance can be obtained from authorized distributor in the official language of the country in which the item is in service. Please contact authorized distributor in your country.

## 7.5 Transportation of product:

The product should be transported in a bag to keep it away from moisture, chemicals and sharp edges as well as to protect it getting in contact with other objects.

## 7.6 Annual Periodic inspection:

Product must be inspected at least one time in a year by manufacturer or a competent person authorized by manufacturer. Product is going to be marked with a sticker that includes the date of the next or last inspection by ARGA Inspector.

### During the inspection of product following information should be recorded:

- Type of the product,
- Model,
- Contact information of producer,
- Serial number, date of production,
- Date of purchase,
- Date of first use,
- Next inspection date,
- Problems,
- Recommendations,
- Name and surname of inspector.

For further information visit [www.argasafety.com](http://www.argasafety.com)



User Information		Anchor information	
Company		Producer / Trade Mark	
Adress		Model	
		Serial number	
		Chief installer	
		Date of purchase	
Are of Anchor		Installation date	
		Last inspection date	

<b>History</b>	
Expectional event during use or usage conditions	
(Exmp:Modification, use or storage at extrem temperatures, fall or fall arrests)	

Control Points	Repair	Can use	Can not use
<b>Observations</b>			
• Verify legability of serial number and etc.			
• The lifetime has not been exceeded.			
• Any modifications or missing parts.			
<b>Chenck conditions</b>			
• Check any cracks, abrasion, deformation, corrosion			

<b>Comments:</b>

**Warning:** The periodic examinations are only to be conducted by a competent person for periodic examination and strictly in accordance with the manufacturer's periodic examination procedures.

<b>Decision</b>	Can use. <input type="checkbox"/>	Can not use. <input type="checkbox"/>
-----------------	-----------------------------------	---------------------------------------

<b>Inspection Date:</b>	<b>Next inspection date:</b>
-------------------------	------------------------------

<b>Responsible person</b>	<b>Chief Inspector Name and surname:</b>
---------------------------	--

<b>Signature</b>	<b>Signature</b>
------------------	------------------

**ARGA İŞ GÜVENLİĞİ VE ENDÜSTRİYEL ÜRÜNLER A.Ş.**

Tuna Mah. 5500/3 Sk. Irmak Plaza No:2 P.K.:35090 Çamdibi -Bornova - İZMİR / TÜRKİYE  
Tel: 0 232 469 39 69 Fax: 0 232 457 50 57 [www.argasafety.com](http://www.argasafety.com) [info@argasafety.com](mailto:info@argasafety.com)

S. 1/1

## 7.7 Guarantee:

This product has 10 year guarantee against all material or manufacturing defects under proper usage and storage conditions. Guarantee is no more valid if; product is used wrong, tears, cut, corrosion, unauthorized repair or changes on the product, damages caused by accidents.

**Manufacturer:** ARGA İŞ GÜVENLİĞİ VE ENDÜSTRİYEL ÜRÜNLER. A.Ş.

**Address** : Tuna Mah. 5500/3 Sok. Irmak Plaza No:2 P.K.:35090 Çamdibi - Bornova - İzmir / TURKEY

**Telephone** : + 90 232 469 69 39

**Fax** : + 90 232 457 50 57

**E-mail** : [info@argasafety.com](mailto:info@argasafety.com)

**Web** : [www.argasafety.com](http://www.argasafety.com)